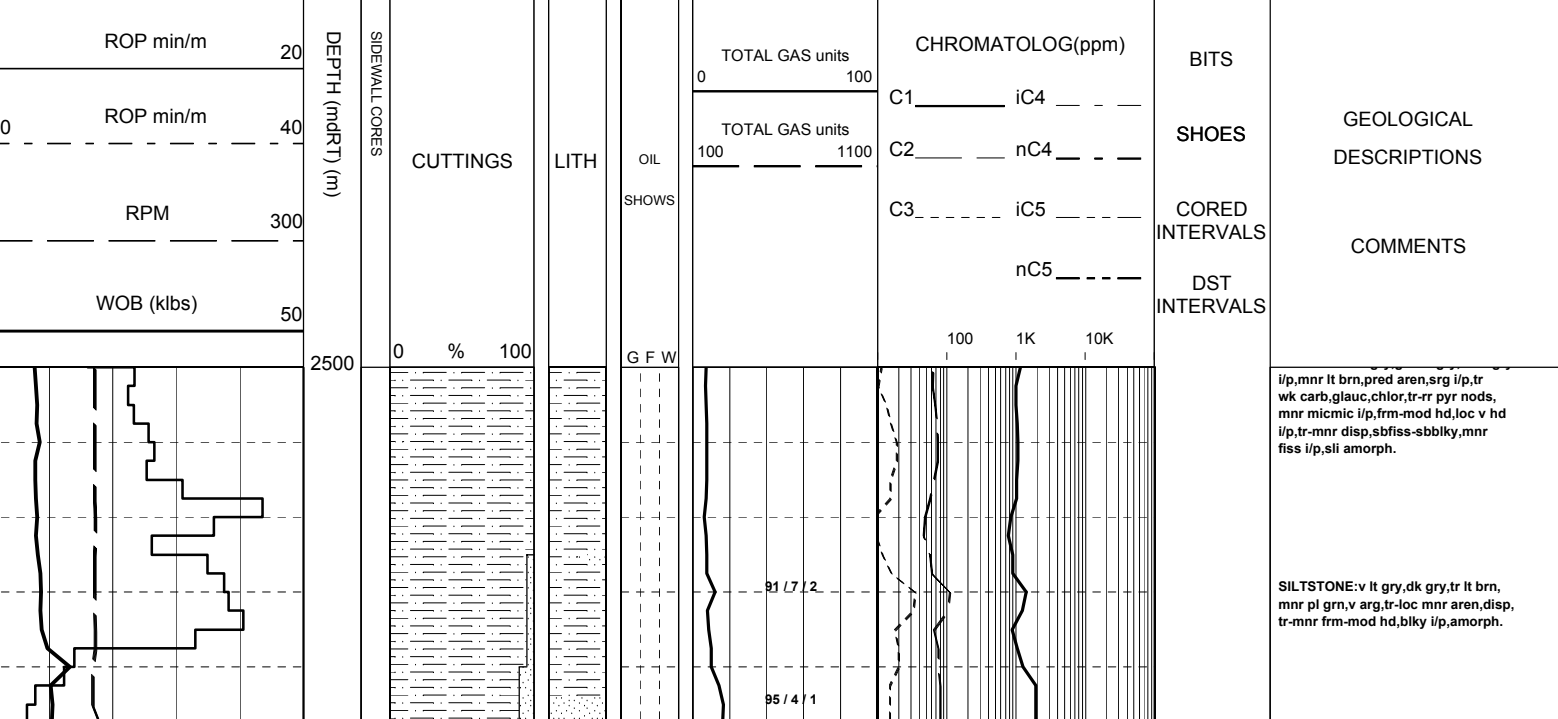


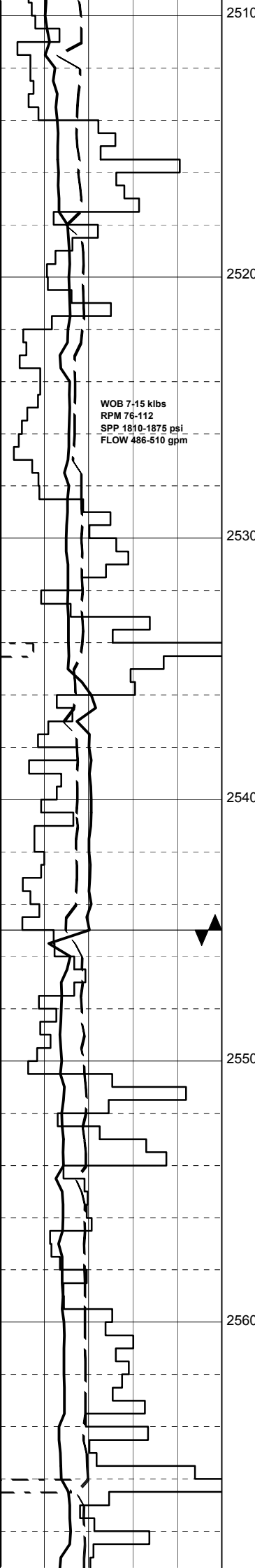
|               |                             |                |              |             |
|---------------|-----------------------------|----------------|--------------|-------------|
| COMPANY       | ORIGIN ENERGY ORIGIN ENERGY |                | SPUD DATE    | 19-09-2005  |
| RIG           | CENTURY 7                   |                | TD DATE      | TD DATE     |
| AREA          | PEP 154                     |                | TD DRILLER   | TD DRILLER  |
| STATE/COUNTRY | VICTORIA, AUSTRALIA         |                | TD WIRELINE  | TD WIRELINE |
| LOCATION      | 38°29'31.96"S               | 142°44'46.66"E | LOGGED FROM  | LOGGED FROM |
| GROUND LVL    | 46.17m                      |                | LOGGED TO    | TD WIRELINE |
| RT HEIGHT     | 5.3m                        |                | FINAL STATUS | STATUS      |
| DEPTH REF     | ROTARY TABLE                |                |              |             |

|                    |                |             |                  |                   |  |              |
|--------------------|----------------|-------------|------------------|-------------------|--|--------------|
| WELL CONFIGURATION |                |             |                  | LOGGING ENGINEERS |  | SCALE 1/ 200 |
| BIT SIZE           | HOLE DEPTH (m) | CASING SIZE | CASING DEPTH (m) | Rory McLellan     |  |              |
| 311mm              | 551m           | 245mm       | 544.5m           | Aroop Dev         |  |              |
| 216mm              | OH TD          |             |                  | Andrew Philips    |  |              |

|         |                             |               |           |          |                    |
|---------|-----------------------------|---------------|-----------|----------|--------------------|
| SYMBOLS |                             | ABBREVIATIONS |           | MUD DATA |                    |
|         | NEW BIT RUN                 | NO SHOW       | NO SHOW   | MW       | MUD WEIGHT         |
|         | NEW CORE BIT RUN            | WEAK SHOW     | WEAK SHOW | MG       | MUD GRADIENT       |
|         | CASING SHOE                 | FAIR SHOW     | FAIR SHOW | FV       | FLUID VISCOSITY    |
|         | LINER HANGER                | GOOD SHOW     | GOOD SHOW | PV       | PLASTIC VISCOSITY  |
|         | MUD LOSS / MUD GAIN         |               |           | YP       | YIELD POINT        |
|         | Recovered<br>SIDEWALL CORES |               |           | Gel      | GEL STRENGTH       |
|         | Not Recovered               |               |           | pH       | ACIDITY            |
|         |                             |               |           | F        | FILTRATE           |
|         |                             |               |           | Ck       | CAKE THICKNESS     |
|         |                             |               |           | S        | SALINITY           |
|         |                             |               |           | SD       | SAND CONTENT       |
|         |                             |               |           | O        | OIL CONTENT        |
|         |                             |               |           | WL       | WATER LOSS         |
|         |                             |               |           | Sol      | SOLIDS CONTENT     |
|         |                             |               |           | Cl       | CHLORIDES          |
|         |                             |               |           | KCI      | POTASSIUM CHLORIDE |
|         |                             |               |           | Ca       | CALCIUM CONTENT    |

|  |              |  |                |  |                 |  |               |  |               |  |              |  |              |  |                |  |              |
|--|--------------|--|----------------|--|-----------------|--|---------------|--|---------------|--|--------------|--|--------------|--|----------------|--|--------------|
|  | CLAYSTONE    |  | MEDIUM SST     |  | LIMESTONE       |  | GYPSUM        |  | TUFF          |  | FERRUGINOUS  |  | CALCAREOUS   |  | GLAUCONITE     |  | MICROFOSSILS |
|  | SILTSTONE    |  | FINE SANDSTONE |  | DOLOMITIC LIMES |  | HALITE        |  | VOLCANIC ROCK |  | FORAMINIFERA |  | DOLOMITIC    |  | MICACEOUS      |  | FOSSILS      |
|  | CONGLOMERATE |  | VF SANDSTONE   |  | DOLOMITE        |  | CEMENT        |  | IGNEOUS ROCK  |  | BRYOZOA      |  | CARBONACEOUS |  | PYRITE         |  | LITHICS      |
|  | COARSE SST   |  | BRECCIA        |  | COAL            |  | CALCARENITITE |  | METAMORPHICS  |  | FELDSPAR     |  | CHERTY       |  | BROKEN FOSSILS |  | SIDERITE     |





SANDSTONE:pred clr,trnsl,frstd,mnr pl yel-pl yelsh brn,f-med grs,occ crs grs, mod wl srt,sbrnd,tr sbang-sbrnd,mod wk sil cmt,no vis mtx,lse & cln,fr inf por, no fluor.

SURVEY @ 2514m: 3.0°

SANDSTONE:lt yelsh grn-pl yel,clr-trnsl i/p dom med-crs grs,mnr f grs,sbang,wk sil cmt, no vis mtx,lse & cln,occ consol w/sil cmt,fr inf por,pr-fr vis por,no fluor.

SANDSTONE:dom lt yel-lt yelsh grn,lt yelsh org,dsky yel,off wh,opq,pred f-med grs,mnr crs grs,mod wl srt,sbrnd,occ sbang,tr mod calc cmt,gen wk sil cmt, no vis mtx,tr carb mat,lse & cln,fr inf por,no fluor.

SILTSTONE:lt grt-med gry,lt grnsh gry,tr lt brnsh yel-med brn,dom aren, mnr arg,com dissem carb spks,com frm-mod hd,moc sft-disp,sbbky-sbfiss, amorph.

SANDSTONE:clr-frstd,dsky wh,pl yel-pl yelsh brn,opq,pred med-crs grs,loc f grs,mod wl srt,sbang-sbrnd,wk sil cmt,no vis mtx,tr pyr nods,lse & cln,pr inf,no fluor.

SANDSTONE:trnsl,frstd,milky,pl yel, pl grnsh grn,mnr clr,v pr srt,crs-v crs,mnr-tr med grs,ang-sbrnd,dom ang, v crs frac grs,mod-loc strg calc cmt, tr-rr wh arg mtx,mnr pyr nods,mnr pl grn & dk grnsh blk liths,lse,pr-loc gd por,tr min fluor,no cut.

CHILDERS COVE #1 PRELIMINARY TD REACHED @ 19:00Hrs, 30/09/2005

DRILLER'S DEPTH: 2545m  
LOGGER'S DEPTH: 2525m

RUN #1: MMR-MLE-MUG-  
MSS-MPD-MCG-MBE-MBE

BIT #3RR2 HC 605S  
SIZE: 8 1/2" JETS:1x14,5x13  
IN: 2545m OUT:ln  
RUN: Drl HRS:Drl  
COND: TBG

SANDSTONE:2553m,trnsl,pl gry,frstd,tr clr,f-v crs,pred med grs,pr-mod srt, dom sbang-sbrnd,tr ang frac crs grs, mod-loc strg sil cmt,wh arg mtx,mnr yelsh org liths,lse & uncon,frm-mod hd aggs,pr-fr inf & pr-v vis por,no fluor.

SILTSTONE:2553m,1)90% brnsh gry,olv gry,lt med-dk gry,sli lt brn,occ dk grnsh blk, aren, arg i/p, carb mat & spks,tr micmic,rr pyr w/ glauc incls,frm-hd

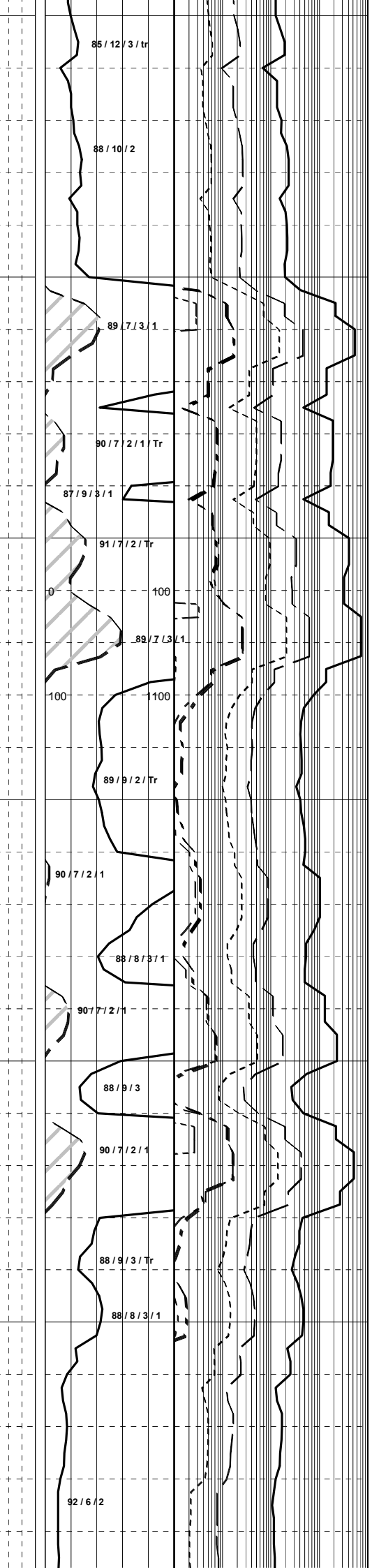
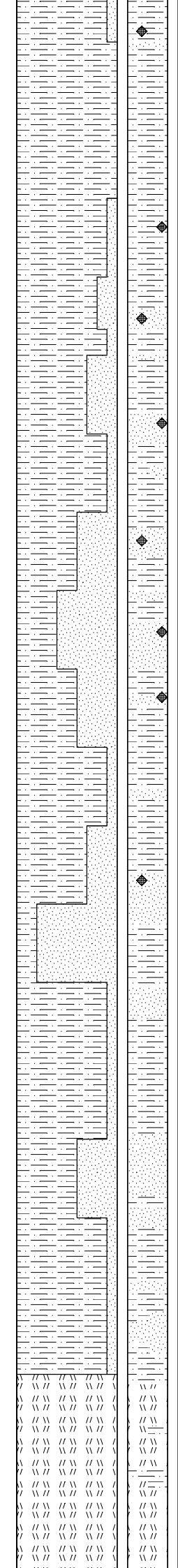
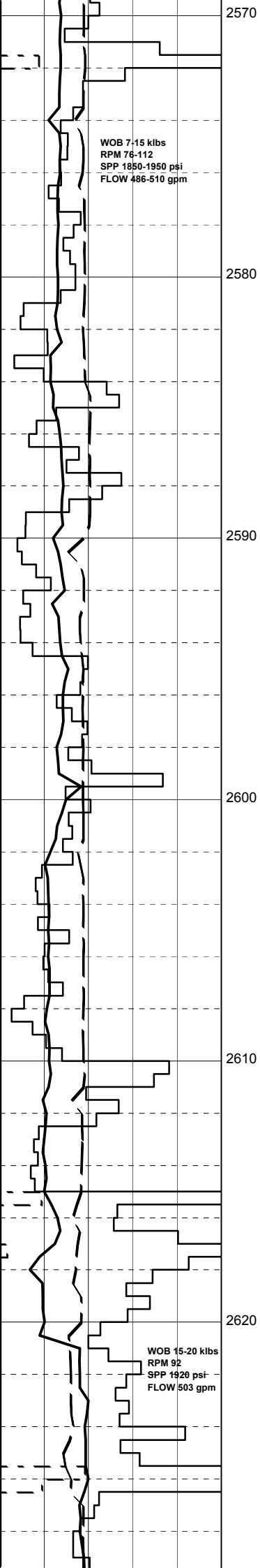
SANDSTONE:2556m,trnsl,v ply gry,frstd, tr,clr,f-v crs,pred med grs,pr-mod srt, dom sbang-sbrnd,tr ang frac crs grs, mod-loc strg sil cmt,wh arg mtx,mnr yelsh org liths,lse,uncons,fr-mod hd aggs,pr-fr inf & pr-v vis por,no fluor.

SILTSTONE:2556m,1)60% wh-off wh,v arg,disp,amorph  
2)40% dk gry,dk grysh brn,sli dk grysh grn,brnsh gry i/p,arg,sli aren,mnr micmic,carb spks & mat,sft-frm,mod hd-hd i/p,biky-sbfiss,amorph i/p.

SILTSTONE:2562m,lt gry,lt grysh bn, wh,rr dk gry & grysh brn,arg,disp,off-sft,mnrfrm,biky,amorph.

SILTSTONE:2565m,lt gry,med lt-med dk gry,incr brnsh gry i/p,sli grnsh-gry, lt olv gry i/p,arg,mnr micmic,mnr pyr, sft-frm,sbbky-sbfiss,amorph i/p.

SILTSTONE:2568m,lt org-off wh,med-dk gry



mnr olv gry,brnsh gry,com aren,occ gd to v f SST,mnr calc,inc disse & nod pyr,carb spks & lams,mnr-loc com chlor,sft-frm,mod hd-hd,sbbiky-sbfiss,amorph.

**SILTSTONE:**2574m,lt gry,lt grysh brn,lt olv gry,mnr med dk gry,pred arg,aren i/p, mnr carb spks & microlams,chlor,rr LMST mat,dissem & mod pyr,frm-mod hd,hd i/p, sbfiss-sbbiky,fiss i/p.

**SANDSTONE:**clr-trnsl,frstd,vf-f,occ mrd, mod-wl srt,sbang-sbrnd,strg calc cmt,wh kaol mtx,mnr pyr nods,lse,uncons,mod hd-hd aggs,pr-fr inf & ti-v pr vis por,no fluor.

**SILTSTONE:**1)90% wh-off wh,v arg,sli calc,disp,amorph  
2)10% lt-med gry,grysh brn,olv gry,arg, aren,frm-mod hd,sbbiky-sbfiss.

**SANDSTONE:**clr-trnsl,frstd,miky,v pl yel i/p,vf-med,pred f,wl srt,sbang-sbrnd, strg-v strg calc cmt,wh kaol mtx,dissem & nod pyr,lse,uncons,mod hd-v hd i/p, fr inf & pr-ti vis por,no fluor.

**SANDSTONE:**2586m,trnsl-clr,frstd,miky, f-crs grs,pred med,mod wl srt,sbrnd-sbang, strg calc cmt,off-pl gry arg mtx, mnr pyr nods,lse,uncons,v hd aggs, pr-mnr fr inf & nil-ti vis por, no fluor.

**SANDSTONE:**2589-2595m,trnsl,miky,frstd, mnr clr,vf-med,pred f,mod wl srt,sbang-sbrnd,strg calc & rr pyr cmt,wh arg/kaol mtx,mod & disse pyr,lse,uncons,mod v hd aggs,pr-fr inf & v pr-ti vis por,rr fluor

**FLUOR:**2589m-2596m,(Tr),dim-mod bri, whsh blu,ppt,v slw whsh blmg c/c,v thn dll whsh r/r.

**SILTSTONE:**2598m,lt-med gry,olv gry, med-med dk gry,mnr grysh brn,dk gry i/p, whsh pl gry,arg,sli calc i/p,chlor,v sft-disp,frm-mod hd,sbbiky-sbfiss,amorph.

**SANDSTONE:**2598m,trnsl,miky,frstd,mnr clr,vf-med,pred f,mod wl srt,sbang-sbrnd, strg calc & rr pyr cmt,wh arg/kaol mtx, mod & disse pyr,chlor,lse,uncons,mod v hd aggs,pr-fr inf & v pr-ti vis por,no fluor

**SANDSTONE:**trnsl-clr,miky,frstd,f-v crs,v pr srt,ang-sbrnd,com ang frac crs grs,mod strg calc cmt,wh kaol mtx,mnr pyr nods,lse,uncons,frm-mod hd,pr inf & v pr-ti vis por,no fluor.

**SILTSTONE:**1)80% brnsh gry,olv gry,arg, mnr micmic,grd to CLYST i/p,carb spks & mat,v sft-frm,mod hd i/p,sbbiky-sbfiss, amorph i/p  
2)20% wh-v pl gry,v arg,disp,amorph.

**SANDSTONE:**gen trnsl-off wh,vf-med,pred f,occ crs,pr srt,sbang-ang,occ sbrnd, mod strg calc cmt,com wh kaol mtx,mnr tr pyr nods,occ lam w/ SLTST,gen lse w/ fri aggs i/p,v pr-ti vis por,v pr inf por,no fluor.

**SILTSTONE:**med olv brn,brnsh gry,occ med dk brn,aren,sli-mod calc i/p, gen sft-mod frm i/p,fiss-sbbiky,gen sbfiss.

**TUFF:**off wh-v lt gmsh gry,tr pnksh rd i/p,mnr tr yelsh org,com clys,rr-tr qtz,abdt calc,mod chlor,com disp, v sft-occ sli frm,com amorph w/ occ sbbiky-biky aggs,mnr altd.

**TUFF:**off wh-v lt gm, tr pnksh rd i/p, mnr tr yelsh org,com clys,rr-com qtz, abdt calc,mnr chlor,com disp- v sft,

